

HOLIDAY 2021



**FALLEN REPRESENTS THE
DETERMINATION AND PERSEVERANCE IT
TAKES TO RISE ABOVE YOUR LIMITS**

**FALLEN FOOTWEAR
IS DESIGNED, TESTED, & DESTROYED BY
OUR TEAM TO ENSURE QUALITY
AND DURABILITY**





FOOTWEAR

RISING SUN	09
T-GUN - TOMMY SANDOVAL PRO MODEL	12
PATRIOT	15
PATRIOT MARKS - BILLY MARKS SIGNATURE COLORWAY	15
PATRIOT HOUSE OF MASK (LIMITED COLLAB)	15
RIPPER - CHRIS COLE PRO MODEL	18
TROOPER - CHRIS COLE PRO MODEL	20
THE GOAT	22
BOMBER	24
BOMBER C-03	26
THE FIEND - ELLIOT SLOAN PRO MODEL	28
TREMONT MID	31

FOOTWEAR OVERVIEW	33
-------------------	----

SIZE CHART	35
------------	----



CHRIS COLE
PHOTO: WILLO

TECH FEATURES



IMPACT FOAM II

THE INSOLE TECHNOLOGY THAT WE DESIGNED IN ORDER TO GIVE YOU THE HIGHEST QUALITY STANDARD FOR ALL OF THE SHOE'S IN OUR LINEUP. THE BOTTOM "BEE PANEL" DESIGN GIVES YOU EXTRA AIR INSIDE OF THE SHOE WHICH MAKES IT MORE BREATHABLE AND ALSO ADDS MUCH MORE COMFORT.



FLX-OLGY

FLX-OLGY FOOTWEAR CONSTRUCTION USES A LIGHTWEIGHT TAPERED EVA MIDSOLE WHICH PROVIDES CUSHIONING FOR THE HEEL AREA WHILE GIVING MAXIMUM BOARD FEEL, CONTROL AND FLEXIBILITY TO THE FOREFOOT. THIS CONSTRUCTION IS DESIGNED TO BE LIGHTWIGHT AND GIVE A SIMILAR FEEL TO A VULCANIZED OUTSOLE WHILE PROVIDING THE COMFORT AND DURABILITY OF A CUPSOLE.



HEEL DRAG REINFORCEMENT

REINFORCED RUBBER ON HEEL TO RESIST HEEL WEAR AND IMPROVE DURABILITY.



TRUE FIT

IN ORDER TO CREATE A SNUG FORM FIT WE UTILIZED A WIDER, SOFTER, ELASTIC TONGUE STRAP. THIS FEATURE ADDS COMFORT AND SUPPORT AROUND THE INSTEP AREA OF THE FOOT.



VEGAN

WE ARE PROUD TO CATER TO THOSE WHO FOLLOW A VEGAN LIFESTYLE. WHEN YOU SEE THIS ICON THIS MEANS THIS PRODUCT IS MADE OUT OF 100% ANIMAL FRIENDLY MATERIALS.



REISSUE

THIS ICON INDICATES THE RELAUNCH OF AN ORIGINAL FALLEN MODEL WITH THE SAME DESIGN, QUALITY AND DURABILITY FROM A PREVIOUS LINE.



STAPLE

THESE ARE THE MODELS THAT MAKE US FALLEN AND THEREFORE WILL ALWAYS REMAIN IN OUR PRODUCT LINEUP.



CHRISTOPHER HIETT
PHOTO: WILLO

VULCANIZED

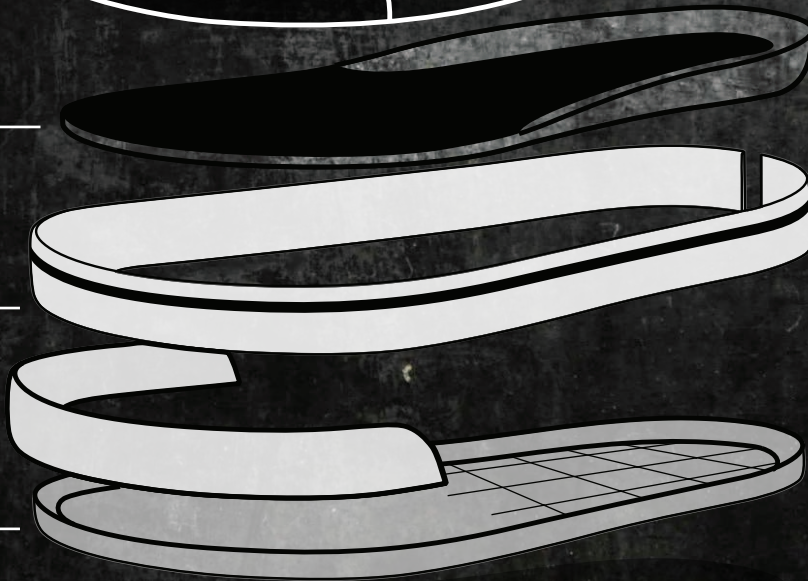
MORE GRIP
MORE BOARD FEEL



IMPACT
FOAM

VULCANIZED
CONSTRUCTION

HDR
HEEL DRAG REINFORCEMENT



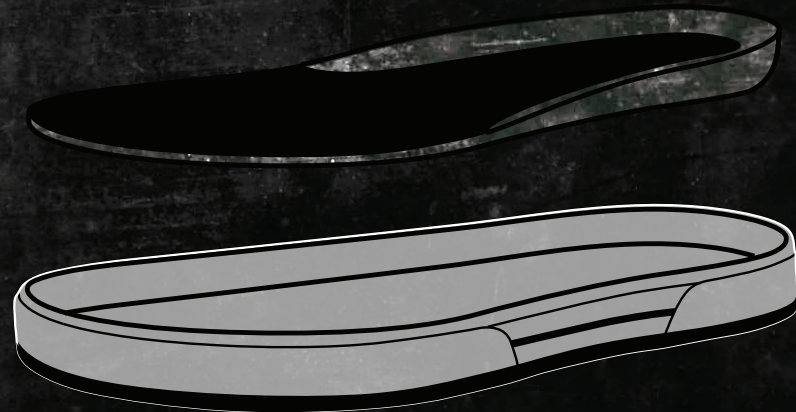
CUPSOLE

MORE DURABLE
MORE COMFORT



TRUEFIT

IMPACT
FOAM



IMPACT II FOAM II

PU LONGER LASTING IMPACT CUSHIONING
SOFTER, MORE COMFORTABLE FEEL
BEE PANEL BOTTOM DESIGN
MORE AIRFLOW CREATES GREATER COMFORT
MAXIMUM BOARD FEEL
40 DEGREES HARDNESS



WE'RE HAPPY TO INTRODUCE OUR BRAND NEW "IMPACT FOAM 2" INSOLE TECHNOLOGY THAT WE DESIGNED IN ORDER TO GIVE YOU THE HIGHEST QUALITY STANDARD FOR ALL OF THE SHOE'S IN OUR LINEUP. THE BOTTOM "BEE PANEL" DESIGN GIVES YOU EXTRA AIR INSIDE OF THE SHOE WHICH MAKES IT MORE BREATHABLE AND ALSO ADDS MUCH MORE COMFORT. OUR GOALS ARE ALWAYS TO MAXIMIZE YOUR BOARD FEEL WHILE SIMULTANEOUSLY CREATING A MUCH MORE COMFORTABLE SHOE THAT WILL LAST LONGER, AND HELP YOU PUSH YOUR OWN INDIVIDUAL LIMITS.

RISING SUN



RISING SUN

AN ODE TO A CLASSIC. THE RISING SUN RE-ISSUE IS BACK FOR A LIMITED TIME! THIS CLASSIC COMES WITH A LIMITED EDITION BOX AND IS OFFERED IN OUR VULCANIZED CONSTRUCTION WITH TRUE FIT TECHNOLOGY. ALL THE TOOLS TO PROVIDE MAXIMUM DURABILITY AND COMFORT.

HOL '21 | 



BLACK / PURPLE / RED  FMM1ZA01
SUEDE / VULCANIZED





T-GUN

TOMMY SANDOVAL PRO MODEL



T-GUN

INSPIRED BY ALL OF TOMMY'S FAVORITE PAST SIGNATURE MODELS. THE "T-GUN" FEATURES A CLASSIC VULCANIZED CONSTRUCTION, WITH A ONE-PIECE TOE CAP THAT WILL GIVE YOU MUCH BETTER BOARD FEEL AND THE FLICK YOU ARE LOOKING FOR. YOU WILL NEVER FIND A SANDOVAL SIGNATURE MODEL WITHOUT OUR TRUE FIT FEATURE. MIX THAT WITH OUR "ABRASION RESISTANT OUTSOLE, IMPACT FOAM INSOLE, AND NATURAL SUEDE + COTTON TWILL AND YOU HAVE A VERY CAPABLE SHOE THAT COVERS ALL OF YOUR MOST IMPORTANT BASIS.



HOL '21 | 



WINE / NEON  FMM1ZA02
SUEDE / VULCANIZED



TRUEFIT

**IMPACT
FOAM II**



PATRIOT



PATRIOT

THE PATRIOT ADDS TO THE DESIGN HERITAGE OF THE CLASSIC FALLEN LOOK AND FEEL. A COMFORTABLE CUPSOLE DESIGNED TO HAVE MORE PROTECTION FOR SKATEBOARDING. THE UPGRADED PATRIOT NOW OFFERS A FLX TECHNOLOGY ON THE SOLEPLATE THAT ALLOWS FOR MORE DURABILITY AND COMFORT AND A TRUE FIT FEEL THAT HOLDS THE TONGUE IN THE SAME PLACE AT ALL TIMES.



HOL '21 | 



OXBLOOD / WHITE / BLACK  FMM1ZA03
SUEDE / CUPSOLE



MIDNIGHT BLUE / WHITE / DK GUM  FMM1ZA04
SUEDE / CUPSOLE



DK ORANGE / BLACK  FMM1ZA05
SUEDE / COTTON TWILL / CUPSOLE



HOUSE OF MASKS BLACK / WHITE  FMM1ZA06
STAINED SUEDE / ACTION LEATHER / CUPSOLE



TRUEFIT

IMPACT
FOAM





RIPPER

CHRIS COLE PRO MODEL



RIPPER

HOL '21 | 

THE "RIPPER" IS A CLASSIC CHRIS COLE SIGNATURE FALLEN FOOTWEAR DESIGN THAT WE BROUGHT BACK FOR THE MOST OBVIOUS OF REASONS, IT'S JUST A GREAT SKATE SHOE WITH A TON OF CLASSIC FEATURES. THESE FEATURES MAKE THE RIPPER MORE DURABLE THAN IT INITIALLY APPEARS. THIS SHOE OFFERS SUPERIOR CUSHIONING IMPACT INSOLES THAT CREATES MAXIMIZE COMFORT, DURABILITY, AND OVERALL FUNCTION. THIS NEW RIPPER WAS BUILT TO TAKE ANYTHING CHRIS COLE COULD THROW AT IT AND WAS DESIGNED TO WITHSTAND THE ABUSE, WHILE ALSO MAINTAINING COMFORT AND LONGEVITY.

CHRIS COLE
RIPPER



BLACK / GRAY / YELLOW  FMM1ZA09
PU NUBUCK / VULCANIZED



TRUEFIT

IMPACT
FOAM II



TROOPER

CHRIS COLE PRO MODEL



TROOPER

A CLASSIC CHRIS COLE SIGNATURE MODEL BUT REDESIGNED BY COLE TO FIT WHAT HE LIKES MOST IN A CUPSOLE SHOE. OFFERING THE ORIGINAL LOOK OF THE "TROOPER" WHILE MAXIMIZING COMFORT, DURABILITY, AND OVERALL FUNCTION. A WORK HORSE SHOE, THE TROOPER IS BUILT TO LAST!

TROOPER
CHRIS COLE



HOL '21 | 



PURPLE  FMM1ZA11
SUEDE / PU NUBUCK / CUPSOLE



HOT WAX  FMM1ZA12
PU TEXTURED / SUEDE / CUPSOLE



TRUEFIT

IMPACT
FOAM





THE GOAT

THE GOAT

WE LOVE TO MAKE OUR FANS HAPPY SO WE ARE STOKED TO BRING BACK A CLASSIC SILHOUETTE WITH A NEW NAME "THE GOAT".
A TIMELESS COMFORTABLE VULCANIZED DESIGN THAT WE ALL LOVED AND MISSED.



HOL '21 | **FF**



BLACK / COLORS **FF** FMM1ZA14
SUEDE / VULCANIZED



BOMBER



BOMBER

THE BOMBER IS A CLASSIC STYLE TO THE FALLEN FOOTWEAR LINE. THIS STAPLE VULCANIZED CONSTRUCTION SHOE HAS BEEN PROVEN TO LAST AND IS READY TO GO OUT OF THE BOX.

HOL '21 | 



BLACK / MUSTARD  FMM1ZA15
SUEDE / CANVAS / VULCANIZED



BOMBER C-03



BOMBER C-03

INTRODUCING THE NEW BOMBER C-03! A CLASSIC STYLE NOW AVAILABLE IN A CUPSOLE CONSTRUCTION. ADDED COMFORT AND GREATER REINFORCEMENTS TO A CLASSIC STYLE.



HOL '21 | 



JADE / BLACK  FMM1ZA16
SUEDE / CUPSOLE



IMPACT II
FOAM

THE FIEND

ELLIOT SLOAN PRO MODEL



THE FIEND

ELLIOT SLOAN'S NEW PRO MODEL "THE FIEND" IS A BRAND NEW STYLE OFFERED IN THE FALLEN FOOTWEAR LINE. DESIGNED BY ELLIOT, THIS SHOE IS A TRUE CUPSOLE MID TOP MADE FOR ANKLE SUPPORT AND LONGEVITY.



HOL '21 | **FF**



BROWN / WHITE **FF** FMM1ZA17
WAXED SUEDE / CUPSOLE



IMPACT II
FOAM II



ELLIOT SLOAN
PHOTO: WILLO

TREMONT MID




TREMONT MID

THIS IS A HYBRID DESIGN THAT MIXES THE "RIVAL AND CHIEF MID" MODELS FROM OUR PAST LINES.

OUR GOAL WITH THE TREMONT AS WELL AS ALL OF OUR MODELS IS TO ALWAYS DELIVER A PIECE OF OUR HISTORY, BUT WITH CURRENT FUNCTIONS AND DESIGNS THAT OVER DELIVER IN PERFORMANCE, COMFORT AND LONGEVITY.

THIS MODEL ALSO HAS A REMOVABLE VELCRO STRAP WHICH IS PERFECT FOR EVERY MID VULCANIZED FAN OUT THERE!

HOL '21 | 



BLACK / BLACK  FMM1ZA18
SUEDE / NUBUCK / VULCANIZED



BLACK / WHITE  FMM1ZA19
SUEDE / NUBUCK / VULCANIZED





FOOTWEAR OVERVIEW

RISING SUN



PATRIOT



RIPPER



TROOPER



THE FIEND



T-GUN



BOMBER C-03



BOMBER



TREMONT MID



THE GOAT





FALLEN TEAM

PRO:

CHIRS COLE
TOMMY SANDOVAL
BILLY MARKS
TONY CERVANTES
ELLIOT SLOAN

AM:

ADAM ARUNSKI
ZACH DOELLING
REGGIE KELLY
DAVE BOHACK
CHRISTOPHER HIETT
DALTON DERN

FOOTWEAR SIZE CHART

FF FALLEN																
USA	5	6	6,5	7	7,5	8	8,5	9	9,5	10	10,5	11	11,5	12	13	14
UK	4	5	5,5	6	6,5	7	7,5	8	8,5	9	9,5	10	10,5	11	12	13
EUR	37	38	38,5	39	40	40,5	41	42	42,5	43	44	44,5	45	46	47	48
CM	23.7	24.5	25	25.4	25.8	26.2	26.6	27.1	27.5	27.9	28.3	28.7	29.2	29.6	30.4	31
INCH	9.3	9.6	9.8	10	10.1	10.3	10.5	10.6	10.8	11	11.1	11.3	11.5	11.6	12	12.2

FF FALLEN						YOUTH
USA	1	2	3	4	5	
UK	13	1	2	3	4	
EUR	32	33	35	36	37	
CM	19,5	20,5	21,5	22	23	
INCH	7.6	8	8.4	8.7	9	

DESIGNED PURELY FOR SKATEBOARDING



RISE WITH THE FALLEN

WWW.FALLENFOOTWEAR.COM

 /FALLENFOOTWEAR

 /FALLEN.FOOTWEAR